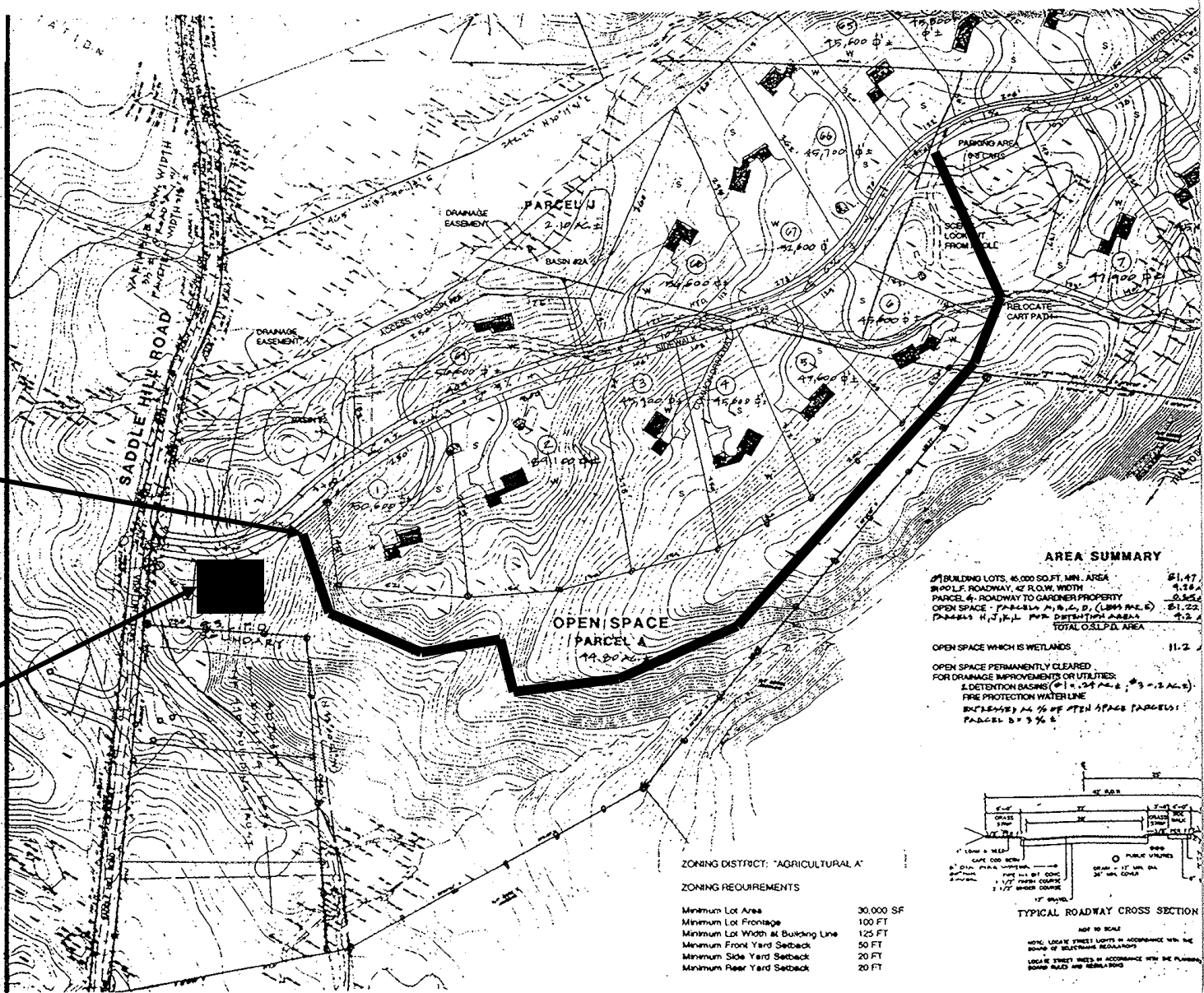




Hopkinton Area Land Trust, Inc. "Douglas B. Sands Memorial Trail". Saddle Hill Rd. & Greenwood Rd. (to open officially October 2001)



AREA SUMMARY

2 BUILDING LOTS, 46,000 SQ. FT. MIN. AREA	21.47
2 PUBLIC ROADWAY, 42 F.L.O.W. WIDTH	4.88
PARCEL A - ROADWAY TO GARDNER PROPERTY	0.26
OPEN SPACE - PARCELS A, B, C, D, (LMA# A-E)	21.22
PARCELS H, I, J, K, L WITH DETENTION BASINS	4.2
TOTAL O.S.P.F.A. AREA	42.03

OPEN SPACE WHICH IS WETLANDS 11.2

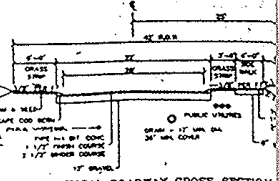
OPEN SPACE PERMANENTLY CLEARED FOR DRAINAGE IMPROVEMENTS OR UTILITIES:

- 1 DETENTION BASIN (#1 & #2 PARCELS - 2.3 AC. ±)
- FIRE PROTECTION WATER LINE
- IMPROVED AS 1% OF OPEN SPACE PARCELS: PARCEL B = 3% ±

ZONING DISTRICT: "AGRICULTURAL A"

ZONING REQUIREMENTS

Minimum Lot Area	30,000 SF
Minimum Lot Frontage	100 FT
Minimum Lot Width at Building Line	125 FT
Minimum Front Yard Setback	50 FT
Minimum Side Yard Setback	20 FT
Minimum Rear Yard Setback	20 FT



TYPICAL ROADWAY CROSS SECTION

NOT TO SCALE

NOTE: LEGAL STREET LIGHTS IN ACCORDANCE WITH THE BOARD OF SELECTMAN REQUIREMENTS

NOTE: LEGAL STREET SIGNS IN ACCORDANCE WITH THE PLANNING BOARD ROAD AND REGULATIONS

Trail Head

Parking area for 3 vehicles